



DAIKIN EUROPE NV

DESADV D96A

EDIFACT MESSAGE

Message Implementation Guide

Document Control

Author(s)	Krist Deveugele – David Longueville
Company	Certipost NV – Daikin Europe NV
Location	Poel 15 - 9000 Gent - Belgium Zandvoordestraat 300 – 8400 Oostende
Telephone	+32 9 233 98 30
Document	DESADV_MIG_v2.doc
Version	1.2
Last Modification Date	22/07/2004 4:09 PM
Status (Draft / Final)	Final

Document History

Date	Version	Details
	1.0	Initial document
	1.1	QTY.6411 : status changed R → O
	1.2	Change General – more information about DESADV message Change to CPS.LIN.RFF added purchase order

All rights reserved. No part of this document may be reproduced or transmitted in any form or by any means, electronic or mechanical, including photocopying and recording, or by any information storage and retrieval system without the permission from Certipost.

The information contained in this document is subject to change without notice. If you find any problems in the documentation, please report them to us in writing. Certipost will not be responsible for any loss, costs or damages incurred due to the use of this documentation.

All trademarks used in this document are property of their respective holders.

Table Of Contents

1	General	4
2	Branching Diagram	5
3	Information about Packages and Handling units in the DESADV message	6
4	Detailed Segment Description	7
4.1	HEADING SECTION	7
4.2	PACKAGING SECTION	13
4.3	HANDLING UNIT SECTION	22
4.4	FOOTER SECTION	27
5	Codelists	28
5.1	PACKING TYPES (PAC SEGMENT – ELEMENT 7065)	28
5.2	UNITS OF MEASURE (QTY SEGMENT – ELEMENT 6411)	28
6	Examples	29
6.1	SIMPLIFIED HANDLING UNITS	29
6.2	NON SIMPLIFIED HANDLING UNITS	30
7	Contact Information	31

1 General

This document describes Daikin's application of the Odette subset of the EDIFACT D96A message DESADV.

The specification offers a detailed description of those data elements which will be used.

The basis of this application is the Odette subset of the Edifact message entitled DESADV V5R1, issued by the secretariat in September 1996.

A DESADV message consists of following information¹:

- The parties involved, one consignor (Supplier) and one consignee (Daikin Europe) with one place of discharge (Delivery Plant)
- The delivery terms valid for the whole despatch
- The despatched article
- The identification of the related schedule agreement / purchase order.
- For each despatched article, the type(s) of packages it is packed in and when specified, the package label numbers
- For each group of handling units, its characteristics and when specified, the transport label numbers.

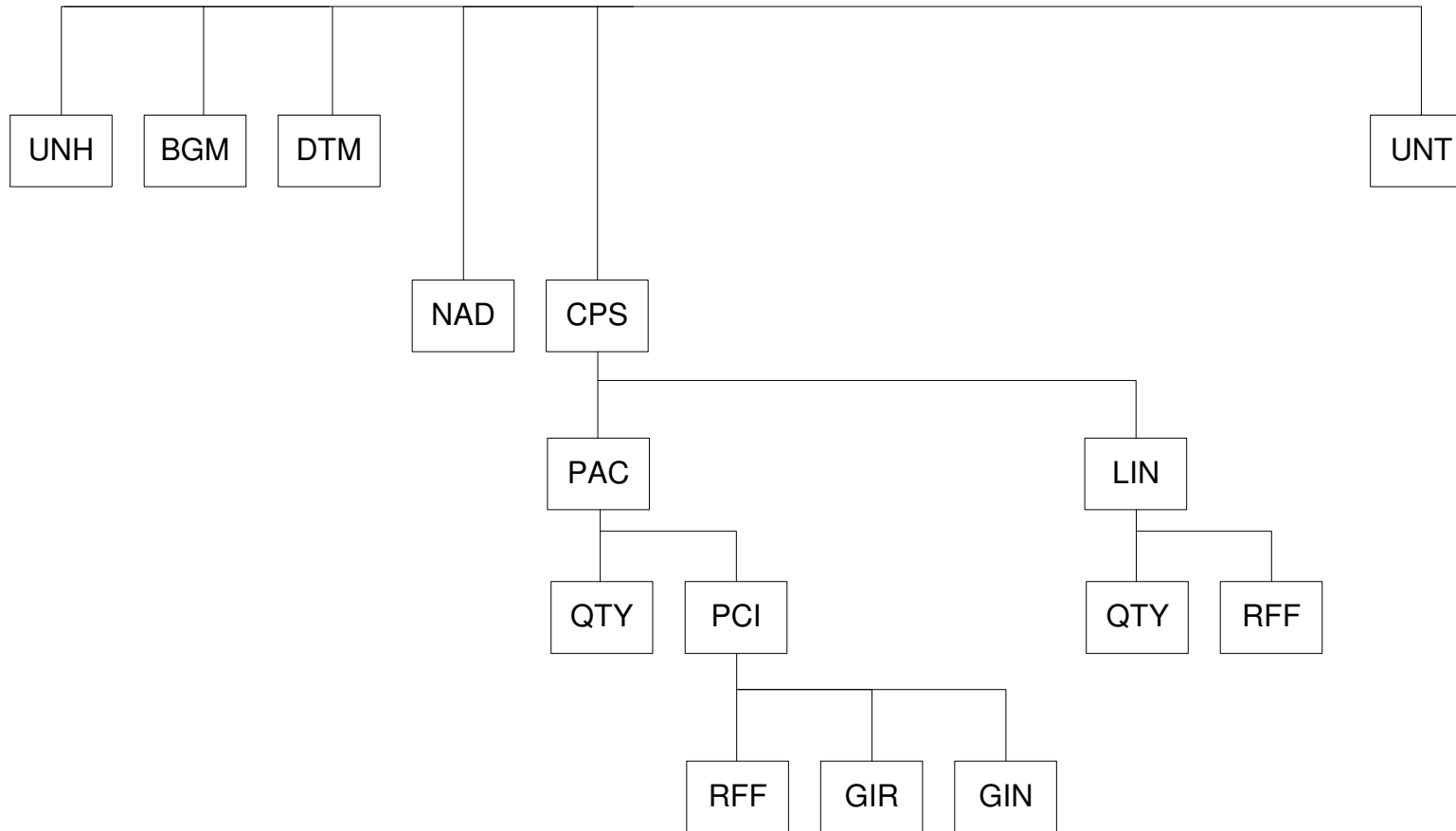
Timing of transmission of the message²:

- The message is sent after the completion of the loading procedure and within one hour after the goods have been shipped.

¹ See AVIEXP/DESADV Implementation Guidelines V5R1 based on D96A – ODETTE – p1-2

² See AVIEXP/DESADV Implementation Guidelines V5R1 based on D96A – ODETTE – p16

2 Branching Diagram



The above shows the simplified Branching Diagram, only reflecting the segments that are used by Daikin Europe. Other segments that comply with the Odette specification can be used within the DESADV message but will not be processed by Daikin Europe.

3 Information about Packages and Handling units in the DESADV message

Definitions:

- **Package:** A unit in which the article itself is packed. Only 1 article number can be packed within a package.
- **Handling unit:** A unit which can be physically handled (e.g. pallet) and that consists of one or multiple packages.

The DESADV Message can be used to specify the following packaging hierarchies:

Simplified Handling Unit: whereby the package in this case is handling unit at the same time.

The following will be identified in the DESADV Message:

- [Packaging Section](#) - CPS.PAC.PCI.7511 ([Handling Unit Qualifier](#)) :
 - S (Simplified Handling Unit)
- [Packaging Section](#) - CPS.PAC.PCI.RFF segment will not be used.
- [Handling unit section](#) will not be used.

Non Simplified Handling Unit: whereby the package in this case is not the handling unit at the same time.

The following will be identified in the DESADV Message:

- [Packaging Section](#) - CPS.PAC.PCI.7511 ([Handling Unit Qualifier](#)) :
 - M (Homogeneous Handling Unit) : the handling unit contains only one article number.
 - G (Mixed Handling Unit) : the handling unit contains more than one article number.
- [Packaging Section](#) - CPS.PAC.PCI.RFF.1154 will refer to the handling unit label number as specified in CPS.PAC.PCI.GIN.C208.7402 ([Handling Unit Label Number](#)).
- [Handling unit section](#) will be used to identify the handling units.

4 Detailed Segment Description

Following is a description of the Groups, Segments and Data Elements as they are in use within the Daikin DESADV Message.

Explanation of the codes:

* M	Mandatory mandatory according to the International Edifact Standard
* R	Required mandatory according to the Daikin demands
* D	Dependent always clarified by 'Conditions'
* O	Optional
* N	Not Used

4.1 Heading section

UNH	MESSAGE HEADER	M 1
	To uniquely identify the Odette subset and the Edifact message.	
0062	MESSAGE REFERENCE NUMBER	M an..14
S009	MESSAGE IDENTIFIER	M
0065	Message type <i>Value:</i> DESADV	M an..6
0052	Message version number <i>Value:</i> D	M an..3
0054	Message release number <i>Value:</i> 96A	M an..3
0051	Controlling agency <i>Value:</i> UN	M an..2
0057	Associated assigned code <i>Value:</i> A01051	R an..6
0068	COMMON ACCESS REFERENCE	N
S010	STATUS OF TRANSFER	N

Example: UNH+1+DESADV:D:96A:UN:A01051'

BGM	BEGINNING OF MESSAGE	M 1
	The unique identification of the message.	
C002	DOCUMENT NAME	R
1001	Document name, coded <i>Value:</i> 351 = Despatch Advice	R an..3
1131	Code list qualifier	N
3055	Code list responsible agency, coded	N
1000	Document name	N
1004	DOCUMENT NUMBER	R an..17 (an..35)
	Despatch Advice Number	
1225	MESSAGE FUNCTION, CODED	N
4343	RESPONSE TYPE, CODED	N

Example: BGM+351+150000452013'

DTM	DATE/TIME	R 2 (10)
	Document date.	
C507	DATE/TIME	M
2005	Date/Time qualifier <i>Value:</i> 137 = Document date	M an..3
2380	Date/Time The date on which the message was created.	R n8 (an..35)
2379	Date/Time format qualifier <i>Value:</i> 203 = CCYYMMDDHHMM	R an..3

Example: DTM+137:200406011124:203'

DTM	DATE/TIME	R 2 (10)
	Estimated arrival date.	
C507	DATE/TIME	M
2005	Date/Time qualifier <i>Value:</i> 132 = Estimated Arrival date/time.	M an..3
2380	Date/Time The estimated date of delivery/arrival of the shipment	R n8 (an..35)
2379	Date/Time format qualifier <i>Value:</i> 102 = CCYYMMDD	R an..3

Example: DTM+132:20040601:102'

NAD	NAME AND ADDRESS	R 2 (10)
	Consignee's identification.	
3035	PARTY QUALIFIER	M an..3
	<i>Value:</i> CN = Consignee	
C082	PARTY IDENTIFICATION DETAILS	R
3039	Party Id. identification The Consignee Code as assigned by Buyer.	R an..20 (an..35)
	1000 = DAIKIN EUROPE 1800 = OESTERBANK	
1131	Code list qualifier	N
3055	Code list responsible agency, coded <i>Value:</i> 92 = Assigned by Buyer	R an..3
C058	NAME AND ADDRESS	O
3124	Name and address line The name of the Consignee: e.g. DAIKIN EUROPE or OESTERBANK	R an..20 (an..35)
C080	PARTY NAME	N
C059	STREET	N
3164	CITY NAME	N
3229	COUNTRY SUB-ENTITY IDENTIFICATION	N
3251	POSTCODE IDENTIFICATION	N
3207	COUNTRY, CODED	N

Example: NAD+CN+1000::92+DAIKIN EUROPE'

NAD	NAME AND ADDRESS	R 2 (10)
	Consignor's identification	
3035	PARTY QUALIFIER	M an..3
	<i>Value:</i> CZ = Consignor	
C082	PARTY IDENTIFICATION DETAILS	R
3039	Party Id. identification number allocated to the Consignor, sending the goods.	R an..10 (an..35)
1131	Code list qualifier	N
3055	Code list responsible agency, coded <i>Value:</i> 92 = Assigned by Buyer	R an..3
C058	NAME AND ADDRESS	O
3124	Name and address line The name of the Consignor	R an..20 (an..35)
C080	PARTY NAME	N
C059	STREET	N
3164	CITY NAME	N
3229	COUNTRY SUB-ENTITY IDENTIFICATION	N
3251	POSTCODE IDENTIFICATION	N
3207	COUNTRY, CODED	N

Example: NAD+ CZ+10604::92+SUPPLIER'

4.2 Packaging section

CPS	CONSIGMENT PACKAGE SEQUENCE	R 9999
	This segment group shall be repeated when several article numbers are delivered within the same shipment.	
7164	HIERACHICAL ID. NUMBER	R n..6 (an..12)
	line number	
7166	HIERACHICAL PARENT IDENTIFICATION	N
7075	PACKING LEVEL, CODED	R an..3
	<i>Value:</i> 1 = Inner Package	
	Example: CPS+1++1'	

CPS.PAC	PACKAGE	R 9999
	This segment group shall be repeated: <ul style="list-style-type: none"> • if an article number is packed in different package types. • If an article number is packed in the same package types, but with different quantities. 	
7224	NUMBER OF PACKAGES	R n..6 (n..8)
	Number of Packages	
C531	PACKAGING DETAILS	N
C202	PACKAGE TYPE	R
7065	Type of packages identification Daikin Europe's identification of the packaging type Values: See Packing Types (PAC Segment – Element 7065)	R an..17
1131	Code list qualifier	N
3055	Code list responsible agency, coded. <i>Value:</i> 92 = defined by the buyer	R an..3
7064	Type of packages	N
C402	PACKAGE TYPE IDENTIFICATION	N
C532	RETURNABLE PACKAGE DETAILS	N

Example: PAC+3++EB1::92'

CPS.PAC.QTY	QUANTITY	R 1 (10)
	Number of articles in the package.	
C186	QUANTITY DETAILS	M
6063	Quantity qualifier <i>Value:</i> 52 = Quantity per pack	M an..3
6060	Quantity Quantity of articles in specified package type	M n..10 (an..15)
6411	Measure unit qualifier Values: See Units of Measure (QTY Segment – Element 6411) Default value: PCE	O an..3
	Example: QTY+52:24:PCE'	

CPS.PAC.PCI PACKAGE IDENTIFICATION R 1000

Describes the type of Handling unit.

This segment group will be repeated when packages refer to different handling units.

4223	MARKING INSTRUCTIONS, CODED	N
C210	MARKS AND LABELS	N
8275	CONTAINER/PACKAGE STATUS, CODED	N
C827	TYPE OF MARKING	R
7511	Type of marking, coded	R an..3
	Handling Unit Qualifier: S = Simplified Handling Unit M = Homogeneous Handling Unit G = Mixed Handling Unit	
1131	Code list qualifier	N
3055	Code list responsible agency, coded <i>Value:</i> 92 = Assigned by Buyer	R an..3
	Example: PCI++++S::92'	

CPS.PAC.PCI.RFF REFERENCE**D 1**

Reference to the Handling Unit, as can be specified further down the structure.

This segment will only be used when homogeneous and mixed handling units are used.

C506 REFERENCE**M**

1153	Reference qualifier <i>Value:</i> AAT = master label number	M an..3
1154	Reference number Reference to the master label number of the handling unit.	R an..17 (an..35)
1156	Line number	N
4000	Reference version number	N

Example: RFF+AAT:4348523'

CPS.PAC.PCI.GIR REFERENCE R 99

This segment will be repeated for each Package Label Number.

7292 SET IDENTIFICATION QUALIFIER M an..3

Value: 3 = Package

C206 IDENTIFICATION NUMBER M

7402 Identity number M an..17
Package label number

7405 Identity number qualifier R an..3
Value: ML = Marking / Label number

4405 Status, coded N

C206 IDENTIFICATION NUMBER N

C206 IDENTIFICATION NUMBER N

C206 IDENTIFICATION NUMBER N

C206 IDENTIFICATION NUMBER N

Example: GIR+3+948271:ML'

CPS.LIN	LINE ITEM	R 1
	As only single-article packages are allowed, the maximum occurrence of this segment group is 1.	
1082	LINE ITEM NUMBER	N
1229	ACTION REQUEST/NOTIFICATION, CODED	N
C212	ITEM NUMBER IDENTIFICATION	R
7140	Item number Daikin Europe's article number	R an..35
7143	Item number type, coded <i>value:</i> IN = Buyer's article number	R an..3
1131	Code list qualifier	N
3055	Code list responsible agency, coded	N
C829	SUB-LINE INFORMATION	N
1222	CONFIGURATION LEVEL	N
7083	CONFIGURATION, CODED	N

Example: LIN+++4PW07225-1 E:IN'

CPS.LIN.QTY	QUANTITY	R 1 (10)
	Quantity of articles despatched.	
C186	QUANTITY DETAILS	M
6063	Quantity qualifier <i>Value:</i> 12 = despatched quantity	M an..3
6060	Quantity Quantity of articles delivered.	M n..10 (n..15)
6411	Measure unit qualifier Values: See Units of Measure (QTY Segment – Element 6411) Default value: PCE Example: QTY+12:350:PCE'	O an..3

CPS.LIN.RFF	REFERENCE	R 1 (10)
	Reference to the purchase order (or Delivery Schedule)	
C506	REFERENCE	M
1153	Reference qualifier <i>Value:</i> ON = purchase order number	M an..3
1154	Reference number Reference to the Delivery Schedule number. Should be in the format: <Agreement Nr>/<Line item Nr>, whereby <ul style="list-style-type: none">• Agreement Nr: DELFOR BGM.1004 (part before slash)• Line item Nr: DELFOR NAD.LIN.1082 Reference to the Purchase order number Should be in the format: <Purchase order number>/<Line item Nr>	R an..17 (an..35)
1156	Line number	N
4000	Reference version number	N

Example: RFF+ON:5500829019/1'

4.3 Handling unit section

CPS	CONSIGMENT PACKAGE SEQUENCE	D 1
	This segment group will only be used when non-simplified handling units are specified.	
7164	HIERACHICAL ID. NUMBER	R n..6 (an..12)
	line number	
7166	HIERACHICAL PARENT IDENTIFICATION	N
7075	PACKING LEVEL, CODED	R an..3
	<i>Value:</i> 3 = handling unit (outer)	
	Example: CPS+4++3'	

CPS.PAC	PACKAGE	R 9999
	This segment group will be repeated for each different type of handling unit	
7224	NUMBER OF PACKAGES	R n..6 (n..8)
	The number of handling units	
C531	PACKAGING DETAILS	N
C202	PACKAGE TYPE	R
7065	Type of packages identification Daikin Europe's identification of the packaging type Values: See Packing Types (PAC Segment – Element 7065)	R an..17
1131	Code list qualifier	N
3055	Code list responsible agency, coded. <i>Value:</i> 92 = defined by the buyer	R an..3
7064	Type of packages	N
C402	PACKAGE TYPE IDENTIFICATION	N
C532	RETURNABLE PACKAGE DETAILS	N
	Example: PAC+4++EP1::92'	

CPS.PAC.QTY	QUANTITY	R 1 (10)
	Number of packages in a single handling unit	
C186	QUANTITY DETAILS	M
6063	Quantity qualifier <i>Value:</i> 189 = Number of packages in one handling unit	M an..3
6060	Quantity Number of packages in one handling unit	M n..10 (an..15)
6411	Measure unit qualifier Example: QTY+189:4'	N

CPS.PAC.PCI	PACKAGE IDENTIFICATION	R 1
	Dummy segment group to make it possible to use the GIN segment. Must be used.	
4223	MARKING INSTRUCTIONS, CODED	N
	<i>Value:</i> 17	
C210	MARKS AND LABELS	N
8275	CONTAINER/PACKAGE STATUS, CODED	N
C827	TYPE OF MARKING	N
	Example: PCI+17'	

CPS.PAC.PCI.GIN GOODS IDENTITY NUMBER R 99

This segment will be repeated for each handling unit label number.

7405 IDENTITY NUMBER QUALIFIER M an..3

Value: ML = Marking / Label number

C208 IDENTITY NUMBER RANGE M

7402 Identity number M an..17
 Handling unit label number

7402 Identity number N

C208 IDENTITY NUMBER RANGE N

C208 IDENTITY NUMBER RANGE N

C208 IDENTITY NUMBER RANGE N

C208 IDENTITY NUMBER RANGE N

Example: GIN+ML+8947828'

4.4 Footer section

UNT MESSAGE TRAILER		M 1
0074	NUMBER Of SEGMENTS IN A MESSAGE	M n..6
0062	MESSAGE REFERENCE NUMBER	M an..14

Example: UNT+54+1'

5 Codelists

5.1 Packing Types (PAC Segment – Element 7065)

Packing types	
Code	Description
EB1	Euro Box Size 1
EB2	Euro Box Size 2
EB3	Euro Box Size 3
EB4	Euro Box Size 4
EB5	Euro Box Size 5
EB6	Euro Box Size 6
EP1	Euro Pallet Full Ht.
KA1	Karton Box 1 (EB1)
KA2	Karton Box 2 (EB2)
KA3	Karton Box 3 (EB3)
KA4	Karton Box 4 (EB4)
SB	Standard Bulk Pallet
WC3	Wooden Crate 3 Plank
WC4	Wooden Crate 4 Plank
WC5	Wooden Crate 5 Plank
XL	Extra Large Pallet

5.2 Units of Measure (QTY Segment – Element 6411)

Packing Units	
Code	Description
PCE	Piece
KGM	Kilogram
LTR	Liter
MTR	Meter
MTK	Square meter

6 Examples

6.1 Simplified Handling units

The example below shows a DESADV identifying the following shipment:

- 2 EB1 packages containing each 100 pieces of ARTICLE1 (total: 200). The boxes are labeled BOX1 and BOX2. ARTICLE1 has been ordered in schedule agreement SCHEDULE1, at line 1.
- 1 EB1 package containing 50 pieces of ARTICLE2 and 1 EB2 package containing 100 pieces of ARTICLE2 (for a total of 150). The boxes are labeled BOX3 and BOX4. ARTICLE2 has been ordered in schedule agreement SCHEDULE2, at line 1.

```
UNH+1+DESADV:D:96A:UN:A01051'  
BGM+351+2000001'  
DTM+137:200405010627:203'  
DTM+132:20040503:102'  
NAD+CZ+SUPPLIER::92'  
NAD+CN+1000::92'  
CPS+1++1'  
PAC+2++EB1::92'  
QTY+52:100:PCE'  
PCI++++S::92'  
GIR+3+BOX1:ML'  
GIR+3+BOX2:ML'  
LIN+++ARTICLE1'  
QTY+12:200:PCE'  
RFF+ON:SCHEDULE1/1'  
CPS+2++1'  
PAC+1++EB1::92'  
QTY+52:50:PCE'  
PCI++++S::92'  
GIR+3+BOX3:ML'  
PAC+1++EB2::92'  
QTY+52:100:PCE'  
PCI++++S::92'  
GIR+3+BOX4:ML'  
LIN+++ARTICLE2'  
QTY+12:150'  
RFF+ON:SCHEDULE2/1'  
UNT+28+1'
```

6.2 Non Simplified Handling units

The example below shows a DESADV identifying the following shipment:

- A Homogeneous Handling unit labeled 'PALLET1' of type EP1 containing
 - Box labeled 'BOX1' of type EB1 containing 100 pieces of ARTICLE1
 - Box labeled 'BOX2' of type EB1 containing 100 pieces of ARTICLE1
- A Mixed Handling unit labeled 'PALLET2' of type EP1 containing
 - Box labeled 'BOX3' of type EB1 containing 100 pieces of ARTICLE1
 - Box labeled 'BOX4' of type EB1 containing 50 pieces of ARTICLE2

- ARTICLE1 has been ordered in schedule agreement SCHEDULE1, at line 1.
- ARTICLE2 has been ordered in schedule agreement SCHEDULE2, at line 1.

```
UNH+1+DESADV:D:96A:UN:A01051'  
BGM+351+2000002'  
DTM+137:200405010627:203'  
DTM+132:20040503:102'  
NAD+CZ+SUPPLIER::92'  
NAD+CN+1000::92'  
CPS+1++1'  
PAC+3++EB1::92'  
QTY+52:100:PCE'  
PCI++++M::92'  
RFF+AAT:PALLET1'  
GIR+3+BOX1:ML'  
GIR+3+BOX2:ML'  
PCI++++G::92'  
RFF+AAT:PALLET2'  
GIR+3+BOX3:ML'  
LIN+++ARTICLE1'  
QTY+12:300:PCE'  
RFF+ON:SCHEDULE1/1'  
CPS+2++1'  
PAC+1++EB1::92'  
QTY+52:50:PCE'  
PCI++++G::92'  
RFF+AAT:PALLET2'  
GIR+3+BOX4:ML'  
LIN+++ARTICLE2'  
QTY+12:50'  
RFF+ON:SCHEDULE2/1'  
CPS+3++3'  
PAC+2++EP1::92'  
QTY+189:2'  
PCI+17'  
GIN+ML+PALLET1'  
GIN+ML+PALLET2'  
UNT+35+1'
```

7 Contact Information

Daikin Europe NV

Business Contact persons

- Danny Janssens
Production Control
E-mail: janssens.d@daikineurope.com

IS Contact persons

- David Longueville
Application System Engineer
E-mail : longueville.d@daikineurope.com
- Tom Tanghe
Application System Engineer
E-mail : tanghe.t@daikineurope.com

Certipost NV

EDI Service Provider

Helpdesk

Tel : + 32 9 233 98 30

Fax: + 32 9 233 98 50

E-mail : helpdesk@aditel.be