



DAIKIN EUROPE NV

DELFOR D96A

EDIFACT MESSAGE

Message Implementation Guide

Document Control

| Author(s) | Krist Deveugele | |
|--------------------------|-------------------------------|------------------|
| Company | Certipost NV | |
| Location | Poel 15 - 9000 Gent - Belgium | |
| Telephone | +32 9 233 98 30 | |
| Document | DELFOR_MIG.doc | |
| Version | 1.0 | |
| Last Modification Date | 07/11/2003 3:33 PM | |
| Status (Draft / Final) | Draft | |
| Document History | | |
| Date | Version | Details |
| | 1.0 | Initial document |

All rights reserved. No part of this document may be reproduced or transmitted in any form or by any means, electronic or mechanical, including photocopying and recording, or by any information storage and retrieval system without the permission from Certipost.

The information contained in this document is subject to change without notice. If you find any problems in the documentation, please report them to us in writing. Certipost will not be responsible for any loss, costs or damages incurred due to the use of this documentation.

All trademarks used in this document are property of their respective holders.

Table Of Contents

| | | |
|-----|---|---|
| 1 | General..... | |
| 2 | Branching Diagram..... | |
| 3 | Detailed Segment Description | |
| 3.1 | HEADING SECTION | 5 |
| 3.2 | DETAIL SECTION..... | 5 |
| 3.3 | FOOTER SECTION..... | 5 |
| 4 | Codelists | |
| 4.1 | PACKING TYPES (NAD.LIN.PACSEGMENT – ELEMENT 7065)..... | 5 |
| 4.2 | UNITS OF MEASURE (NAD.LIN.PAC.QTYSEGMENT – ELEMENT 6411)..... | 5 |
| 5 | Contact Information..... | |
| 6 | Trading Partner Datasheet..... | |
| 6.1 | TRADING PARTNER DATASHEET FOR OFTP/ISDN CONNECTION..... | 5 |

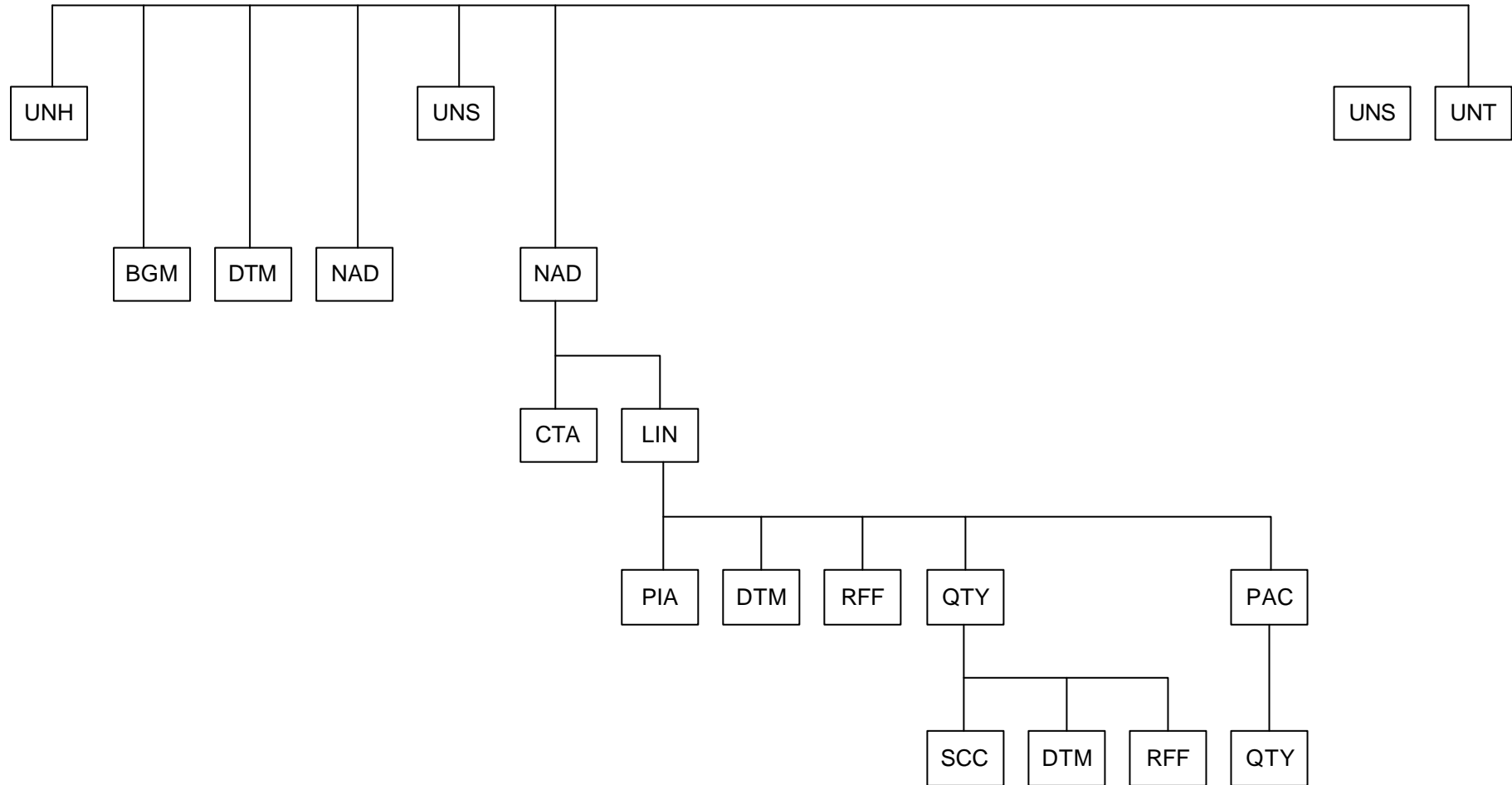
1 General

This document describes Daikin's application of the Odette subset of the EDIFACT D96A message DELFOR.

The specification offers a detailed description of those data elements which will be used.

The basis of this application is the Odette subset of the Edifact message entitled DELFOR V4R0, issued by the secretariat in September 1996.

2 Branching Diagram



3 Detailed Segment Description

Following is a description of the Groups, Segments and Data Elements as they are in use withing the Daikin DELFOR Message.

Explanation of the codes:

- * **M** Mandatory
mandatory according to the International Edifact Standard
- * **R** Required
mandatory according to the Daikin demands
- * **D** Dependent
always clarified by 'Conditions'
- * **N** Not Used

3.1 Heading section

| | | |
|-------------|---|-----------------|
| UNH | MESSAGE HEADER | M 1 |
| | To uniquely identify the Odette subset and the Edifact message. | |
| 0062 | MESSAGE REFERENCE NUMBER | M an..14 |
| S009 | MESSAGE IDENTIFIER | M |
| 0065 | Message type <i>Value:</i> DELFOR | M an..6 |
| 0052 | Message version number <i>Value:</i> D | M an..3 |
| 0054 | Message release number <i>Value:</i> 96A | M an..3 |
| 0051 | Controlling agency <i>Value:</i> UN | M an..2 |
| 0057 | Associated assigned code <i>Value:</i> A09041 | R an..6 |
| 0068 | COMMON ACCESS REFERENCE | N |
| S010 | STATUS OF TRANSFER | N |

Example: UNH+1+DELFOR:D:96A:UN:A09041'

| | | |
|-------------|---|--------------------------|
| BGM | BEGINNING OF MESSAGE | M 1 |
| | The unique identification of the message. | |
| C002 | DOCUMENT NAME | R |
| 1001 | Document name, coded <i>Value:</i> 241 = Delivery Schedule | R an..3 |
| 1131 | Code list qualifier | N |
| 3055 | Code list responsible agency, coded | N |
| 1000 | Document name | N |
| 1004 | DOCUMENT NUMBER | R an..17 (an..35) |
| | Delivery Schedule number. This number is in the format <Agreement Nr>/<Release Nr> | |
| 1225 | MESSAGE FUNCTION, CODED | N |
| 4343 | RESPONSE TYPE, CODED | N |
| | Example: BGM+241+5500000037/13' | |

| | | |
|-------------|--|-----------------|
| DTM | DATE/TIME | M 4 (10) |
| | Document date. | |
| C507 | DATE/TIME | M |
| 2005 | Date/Time qualifier <i>Value:</i> 137 = Document date | M an..3 |
| 2380 | Date/Time The date on which the message was created. | R n8 (an..35) |
| 2379 | Date/Time format qualifier <i>Value:</i> 102 = CCYYMMDD | R an..3 |
| | Example: DTM+137:20010601:102' | |
| DTM | DATE/TIME | R 4 (10) |
| | Effective from date. | |
| C507 | DATE/TIME | M |
| 2005 | Date/Time qualifier <i>Value:</i> 157 = Validity start date | M an..3 |
| 2380 | Date/Time The date from which the new delivery schedule is valid. | R n8 (an..35) |
| 2379 | Date/Time format qualifier <i>Value:</i> 102 = CCYYMMDD | R an..3 |
| | Example: DTM+157:20010601:102' | |

| NAD | NAME AND ADDRESS | R 2 (20) |
|-------------|--|-------------------|
| | Supplier's identification of Daikin Europe. | |
| 3035 | PARTY QUALIFIER | M an..3 |
| | <i>Value:</i> BY = Buyer | |
| C082 | PARTY IDENTIFICATION DETAILS | R |
| 3039 | Party Id. identification The Buyercode as known at the Supplier. | R an..20 (an..35) |
| 1131 | Code list qualifier | N |
| 3055 | Code list responsible agency, coded <i>Value:</i> 91 = Assigned by Seller | R an..3 |
| C058 | NAME AND ADDRESS | R |
| 3124 | Name and address line The name of the Buyer: DAIKIN EUROPE | R an..20 (an..35) |
| C080 | PARTY NAME | N |
| C059 | STREET | N |
| 3164 | CITY NAME | N |
| 3229 | COUNTRY SUB-ENTITY IDENTIFICATION | N |
| 3251 | POSTCODE IDENTIFICATION | N |
| 3207 | COUNTRY, CODED | N |

Example: NAD+BY+28741::91+DAIKIN EUROPE'

| | | |
|-------------|---|-------------------|
| NAD | NAME AND ADDRESS | R |
| | Daikin Europe's identification of the supplier. | |
| 3035 | PARTY QUALIFIER | M an..3 |
| | <i>Value:</i> SE = Seller | |
| C082 | PARTY IDENTIFICATION DETAILS | R |
| 3039 | Party Id. identification Supplier number allocated to the Seller. | R an..10 (an..35) |
| 1131 | Code list qualifier | N |
| 3055 | Code list responsible agency, coded <i>Value:</i> 92 = Assigned by Buyer | R an..3 |
| C058 | NAME AND ADDRESS | R |
| 3124 | Name and address line The name of the Supplier | R an..20 (an..35) |
| C080 | PARTY NAME | N |
| C059 | STREET | N |
| 3164 | CITY NAME | N |
| 3229 | COUNTRY SUB-ENTITY IDENTIFICATION | N |
| 3251 | POSTCODE IDENTIFICATION | N |
| 3207 | COUNTRY, CODED | N |

Example: NAD+SE+10604::92+SUPPLIER'

UNS SECTION CONTROL M 1

To separate Header and Detail sections of the message.

0081 SECTION IDENTIFICATION M a1

Value: D = Separate header from detail

Example: UNS+D'

3.2 Detail section

| | | |
|-------------|---|-------------------|
| NAD | NAME AND ADDRESS | R 1 (500) |
| 3035 | PARTY QUALIFIER | M an..3 |
| | <i>Value:</i> CN = Consignee | |
| C082 | PARTY IDENTIFICATION DETAILS | R |
| 3039 | Party Id. identification Daikin Europe´s plant or warehouse number. | M an..10 (an..35) |
| | 1000 = DAIKIN EUROPE 1800 = OESTERBANK | |
| 1131 | Code list qualifier | N |
| 3055 | Code list responsible agency, coded <i>Value:</i> 92 = Assigned by Buyer | R an..3 |
| C058 | NAME AND ADDRESS | R |
| 3124 | Name and address line The name of the Delivery Plant | R an..20 (an..35) |
| C080 | PARTY NAME | N |
| C059 | STREET | N |
| 3164 | CITY NAME | N |
| 3229 | COUNTRY SUB-ENTITY IDENTIFICATION | N |
| 3251 | POSTCODE IDENTIFICATION | N |
| 3207 | COUNTRY, CODED | N |

Example: NAD+CN+1800::92+OESTERBANK

| | | |
|-------------|--|----------------|
| CTA | CONTACT INFORMATION | R 5 |
| | Daikin Europe Information Contact | |
| 3139 | CONTACT FUNCTION, CODED | R an..3 |
| | <i>Value:</i> IC = Information Contact | |
| C056 | DEPARTMENT OR EMPLOYEE DETAILS | R |
| 3413 | Department or employee identification | N an..17 |
| 3412 | Department or employee | R an..35 |
| | Example: CTA+IC+:002Mr. S. Van Acker' | |

| NAD.LIN | LINE ITEM | R 9999 |
|----------------|---|----------------|
| 1082 | LINE ITEM NUMBER | R |
| 1229 | ACTION REQUEST/NOTIFICATION, CODED | R an..3 |
| | <i>Value:</i> 3 = Change to completely replace the previous delivery instruction for the updated | |
| C212 | ITEM NUMBER IDENTIFICATION | R |
| 7140 | Item number Daikin Europe's article number | R an..35 |
| 7143 | Item number type, coded <i>value:</i> IN = Buyer's article number | R an..3 |
| 1131 | Code list qualifier | N |
| 3055 | Code list responsible agency, coded | N |
| C829 | SUB-LINE INFORMATION | N |
| 1222 | CONFIGURATION LEVEL | N |
| 7083 | CONFIGURATION, CODED | N |

Example: LIN+1+3+4PW07225-1 E:IN'

NAD.LIN.PIA ADDITIONAL PRODUCT IDENTIFICATION**D 1 (10)**

Additional information about the article.

4347 PRODUCT ID. FUNCTION QUALIFIER**R an..3***Value:* 1 = Additional identification**C212 ITEM NUMBER IDENTIFICATION****R**7140 Item number
Additional Article Number.**R an..35**7143 Item number type, coded
Value: SA = Supplier's article number**R an..3**

1131 Code list qualifier

N

3055 Code list responsible agency, coded

N

Example: PIA+1+720010800:SA'

NAD.LIN.DTM DATE/TIME**R 2 (5)**

Calculation date.

C507 DATE/TIME**M**

2005 Date/Time qualifier

M an..3

Value: 257 = Calculation date

2380 Date/Time

R n8 (an..35)

Reconciliation date for delivery schedule.

2379 Date/Time format qualifier

R an..3

Value: 102 = CCYYMMDD

Example: DTM+257:20010601:102'

| NAD.LIN.RFF | REFERENCE | R 2 (10) |
|--------------------|--|-------------------|
| | Daikin Europe's Agreement number. | |
| C506 | REFERENCE | M |
| 1153 | Reference qualifier <i>Value:</i> CT = Agreement Number | M an..3 |
| 1154 | Reference number The agreement number. | R an..17 (an..35) |
| 1156 | Line number The item nr withing the agreement | R an..6 |
| 4000 | Reference version number | N |

Example: RFF+CT:5500000037:30'

NAD.LIN.QTY QUANTITY**R 200**

Cumulated quantity.

C186 QUANTITY DETAILS**M**

6063 Quantity qualifier

M an..3

Value: 70 = Cumulative quantity received6060 Quantity
Cumulated deliveries.

M n..10 (n..15)

6411 Measure unit qualifier

R an..3

Example: QTY+70:19025:PCE'

NAD.LIN.QTY QUANTITY
D

The latest received delivery is presented here.

Conditions:

This segment will be omitted, if no despatch is received.

C186 QUANTITY DETAILS
M

6063 Quantity qualifier

M an..3

Value: 12 = Despatch quantity
quantity despatched by the seller

6060 Quantity
The quantity delivered according to DESADV.

M n..10 (n..15)

6411 Measure unit qualifier

R an..3

Example: QTY+12:2300:PCE'

NAD.LIN.QTY.RFF REFERENCE
D 1 (10)

Condition:

This segment will be omitted, if no despatch is received.

C506 REFERENCE
M

1153 Reference qualifier

M an..3

Value: AAK = Despatch advice number

1154 Reference number
Despatch note number.

R an..35

1156 Line number

N

4000 Reference version number

N

Example: RFF+AAK:75111'

| NAD.LIN.QTY.RFF.DTM | DATE/TIME | D 1 |
|---------------------|--|---------------|
| | <i>Condition:</i> This segment will be omitted, if no despatch is received. | |
| C507 | DATE/TIME | M |
| 2005 | Date/Time qualifier <i>Value:</i> 171 = Reference date | M an..3 |
| 2380 | Date/Time Date of despatch | R n8 (an..35) |
| 2379 | Date/Time format qualifier <i>Value:</i> 102 = CCYYMMDD | R an..3 |

Example: DTM+171:20010501:102'

| NAD.LIN.QTY | QUANTITY | R |
|--------------------|--|------------------|
| C186 | QUANTITY DETAILS | M |
| 6063 | Quantity qualifier <i>Value:</i> 113 = Quantity to be delivered | M an..3 |
| 6060 | Quantity Quantity to be delivered | M n..10 (an..15) |
| 6411 | Measure unit qualifier | R an..3 |

Example: QTY+113:2850:PCE'

NAD.LIN.QTY.SCC SCHEDULING CONDITIONS **R 1**

4017 DELIVERY PLAN STATUS INDICATOR, CODED **R an..3**

Value:

1 = Firm

2 = Commitment for manufacturing and material

4 = Planning/Forecast

4493 DELIVERY REQUIREMENTS, CODED **N**

C329 PATTERN DESCRIPTION **N**

Example: SCC+1'

NAD.LIN.QTY.DTM DATE/TIME **R 1 (2)**

C507 DATE/TIME **M**

2005 Date/Time qualifier **M an..3**

2 = Delivery date/time requested

63 = Delivery date/time, latest date used as start date when a period is used

64 = Delivery date/time, earliest date used when a period is used

2380 Date/Time Delivery date **R n..12 (an..35)**

2379 Date/Time format qualifier **R an..3**
Value: 102 = CCYYMMDD

Example: DTM+2:20010615:102'

| NAD.LIN.PAC | PACKAGE | R 3 (50) |
|-------------------------|---|------------------|
| 7224 | NUMBER OF PACKAGES | N |
| C531 | PACKAGING DETAILS | N |
| C202 | PACKAGE TYPE | R |
| 7065 | Type of packages identification Daikin Europe's identification of the packaging type Values: see Packing Types (NAD.LIN.PAC Segment – Element 7065) | R an..17 |
| 1131 | Code list qualifier | N |
| 3055 | Code list responsible agency, coded. <i>Value:</i> 92 = defined by the buyer | R an..3 |
| 7064 | Type of packages | N |
| C402 | PACKAGE TYPE IDENTIFICATION | N |
| C532 | RETURNABLE PACKAGE DETAILS | N |
| Example: PAC+++EB1::92' | | |
| NAD.LIN.PAC.QTY | QUANTITY | R |
| C186 | QUANTITY DETAILS | M |
| 6063 | Quantity qualifier <i>Value:</i> 52 = Quantity per pack | M an..3 |
| 6060 | Quantity Quantity in specified package type | M n..10 (an..15) |
| 6411 | Measure unit qualifier Values: see Units of Measure (NAD.LIN.PAC.QTY Segment – Element 6411) | R an..3 |
| Example: QTY+52:24:PCE' | | |

3.3 Footer section

UNS SECTION CONTROL M 1

To separate Header and Detail sections of the message.

0081 SECTION IDENTIFICATION M a1

Value: S = Separate summary from detail

Example: UNS+S'

UNT MESSAGE TRAILER M 1

0074 NUMBER Of SEGMENTS IN A MESSAGE M n..6

0062 MESSAGE REFERENCE NUMBER M an..14

Value: S = Separate summary from detail

Example: UNS+S'

4 Codelists

4.1 Packing Types (NAD.LIN.PAC Segment – Element 7065)

| Packing types | |
|---------------|----------------------|
| Code | Description |
| EB1 | Euro Box Size 1 |
| EB2 | Euro Box Size 2 |
| EB3 | Euro Box Size 3 |
| EB4 | Euro Box Size 4 |
| EB5 | Euro Box Size 5 |
| EB6 | Euro Box Size 6 |
| EP1 | Euro Pallet Full Ht. |
| KA1 | Karton Box 1 (EB1) |
| KA2 | Karton Box 2 (EB2) |
| KA3 | Karton Box 3 (EB3) |
| KA4 | Karton Box 4 (EB4) |
| SB | Standard Bulk Pallet |
| WC3 | Wooden Crate 3 Plank |
| WC4 | Wooden Crate 4 Plank |
| WC5 | Wooden Crate 5 Plank |
| XL | Extra Large Pallet |

4.2 Units of Measure (NAD.LIN.PAC.QTY Segment – Element 6411)

| Packing Units | |
|---------------|--------------|
| Code | Description |
| PCE | Piece |
| KGM | Kilogram |
| LTR | Liter |
| MTR | Meter |
| MTK | Square meter |

Example DELFOR Message

UNH+1+DELFOR:D:96A:UN:A09041'
BGM+241+5500000037/13'
DTM+137:20030702:102'
DTM+157:20030702:102'
NAD+BY+38972::91+DAIKIN EUROPE'
NAD+SE+23892::92+SUPPLIER'
UNS+D'
NAD+CN+1800::92+OESTERBANK'
LIN+1+3+4PW07225-1 E:IN'
DTM+257:20030702:102'
RFF+CT:5500000037:30'
QTY+70:19025:PCE'
QTY+12:2300:PCE'
RFF+AAK:75111'
DTM+171:20030605:102'
QTY+113:2850:PCE'
SCC+1'
DTM+2:20030613:102'
QTY+113:100:PCE'
SCC+1'
DTM+2:20030613:102'
QTY+113:3100:PCE'
SCC+1'
DTM+2:20030620:102'
QTY+113:2300:PCE'
SCC+1'
DTM+2:20030620:102'
QTY+113:600:PCE'
SCC+1'
DTM+2:20030627:102'
QTY+113:6800:PCE'
SCC+1'
DTM+2:20030704:102'
QTY+113:2800:PCE'
SCC+1'
DTM+2:20030711:102'
QTY+113:1400:PCE'
SCC+4'
DTM+2:20030814:102'
QTY+113:1000:PCE'
SCC+4'
DTM+64:20030818:102'
DTM+63:20030824:102'
QTY+113:1700:PCE'
SCC+4'
DTM+64:20030825:102'
DTM+63:20030831:102'
QTY+113:1500:PCE'

SCC+4'
DTM+64:20030901:102'
DTM+63:20030907:102'
QTY+113:1200:PCE'
SCC+4'
DTM+64:20030908:102'
DTM+63:20030914:102'
QTY+113:1300:PCE'
SCC+4'
DTM+64:20030915:102'
DTM+63:20030921:102'
QTY+113:1500:PCE'
SCC+4'
DTM+64:20030922:102'
DTM+63:20030928:102'
QTY+113:900:PCE'
SCC+4'
DTM+64:20030929:102'
DTM+63:20031005:102'
QTY+113:1500:PCE'
SCC+4'
DTM+64:20031006:102'
DTM+63:20031012:102'
QTY+113:1700:PCE'
SCC+4'
DTM+64:20031013:102'
DTM+63:20031019:102'
QTY+113:2400:PCE'
SCC+4'
DTM+64:20031020:102'
DTM+63:20031026:102'
QTY+113:1200:PCE'
SCC+4'
DTM+64:20031027:102'
DTM+63:20031102:102'
UNS+S'
UNT+85+1'

5 Contact Information

Daikin Europe NV
PERSON NAME
PERSON FUNCTION
Tel : TBD
Fax: TBD
E-mail : TBD

Certipost NV
EDI Service Provider
Helpdesk
Tel : + 32 9 233 98 30
Fax: + 32 9 233 98 50
E-mail : helpdesk@aditel.be

6 Trading Partner Datasheet
6.1 Trading Partner Datasheet for OFTP/ISDN Connection

| | | | |
|-------------------------------------|------|-------------------------|-------------------------|
| company | | Daikin Europe NV | <Supplier> |
| ISDN Nr. | | +32 9 233 98 37 | |
| Physical address (SSID) | | O094500000005413512 | |
| Logical address (UNB) | | O094500000005413512DENV | |
| Passwords | | | |
| Contact | name | Helpdesk Aditel | |
| | tel | + 32 9 233 98 30 | |
| | fax | + 32 9 233 98 50 | |
| | mail | helpdesk@aditel.be | |
| Supplier Number at Daikin Europe NV | | | |
| Buyer Number at Supplier | | | |
| format (F/rcl, V/rcl, U) | | | F |
| encoding (ASCII, EBCDIC) | | | ASCII |