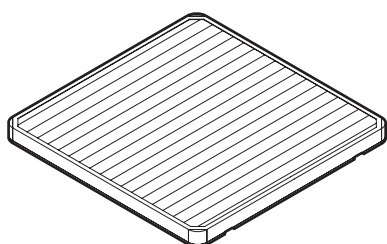




Installation manual

High performance pre-filter



BAF552AA160

Installation manual
High performance pre-filter

English

Table of contents

1	About this document	2
2	About the kit	2
2.1	Components	2
2.2	Compatibility	2
3	Installation	2
3.1	Before installation	2
3.2	Installation site requirements of the unit	2
3.3	To install the pre-filter	2
4	Configuration	3
4.1	Field setting	3
5	Disposal	3

1 About this document

Target audience

Authorised installers

Documentation set

This document is part of a documentation set. The complete set consists of:

- **General safety precautions:**
 - Safety instructions that you must read before installing
 - Format: paper (in the box of the indoor unit)
- **Installation manual:**
 - Installation instructions
 - Format: paper (supplied in the kit)

Latest revisions of the supplied documentation may be available on the regional Daikin website or via your dealer.

Scan the QR code below to find the full documentation set and more information about your product on Daikin website.



The original documentation is written in English. All other languages are translations.

2 About the kit

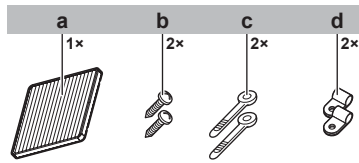
NOTICE

- Read this manual carefully before installation together with all documents from the documentation set, see "1 About this document" [▶ 2].
 - Be sure to use only the specified components delivered with the option kit when installing.
-
- When the Daikin high performance pre-filter is installed, air volume, performance and operation sound of the indoor unit may be altered.
 - Only the Daikin high performance pre-filter is permitted for replacement.
 - Daikin high performance pre-filter CANNOT be used with other filters, chambers, fresh air intake kits or air discharge outlet sealing member kit (for selection of 2 or 3 way air blow).
 - Replace the filter when the filter sign is displayed on the remote controller.

- Contact your dealer for instruction regarding installation or replacement of the filter.

2.1 Components

Make sure you have all the following part included in your kit:



- a Daikin high performance pre-filter
- b Screw
- c Tie wrap
- d Clamp

2.2 Compatibility

Combine the Daikin high performance pre-filter with the following indoor units:

■ 2-1 Model group

Group A	Group B	Group C	Group D
FCAG35~60	FCAG71	FCAG100~140	FXFQ125
FXFQ20~32	FCAHG71~140	FXFQ80+100	FXFA125
FXFA20~32	FXFQ40~63	FXFN50+112	FXFN71
	FXFA40~63	FXFA80+100	

Refer to this table when performing "4.1 Field setting" [▶ 3].

For a full list of compatible units, refer to the option list.

3 Installation

3.1 Before installation

Check the "2.2 Compatibility" [▶ 2] before installation.

Refer to the installation and operation manual of the indoor unit and the decoration panel.

3.2 Installation site requirements of the unit



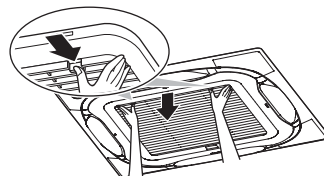
Do NOT install in places:

- With mineral oil, or filled with oil vapour or spray, like in kitchens.
- Where corrosive gas like sulphurous gas exists.
- Where the humidity is ≥90% and the temperature is ≥65°C.
- That require a high ceiling mode setting and 2/3 way blow mode setting of the indoor unit.

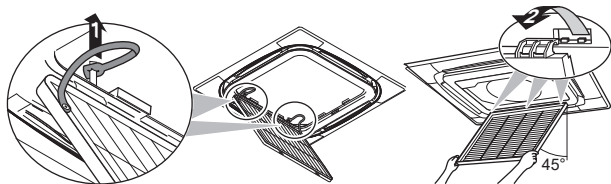
3.3 To install the pre-filter

Open the suction grille.

- 1 Slowly lower the suction grille while pressing down on the two knobs.

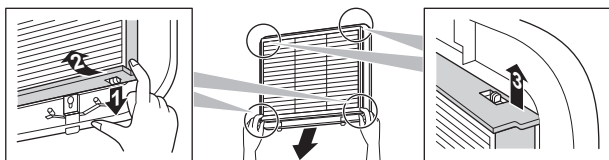


- Release the strap of the suction grille from the hook (2 locations). Open the suction grille in 45° angle.



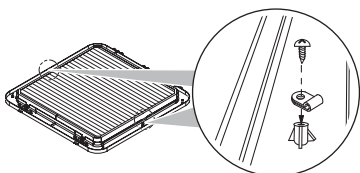
Remove the original air filter from suction grille.

- Pull the end of the original air filter diagonally down to unhook the air filter from the suction grille.
- Lift up the air filter and remove the original air filter from the hook on the suction grille.

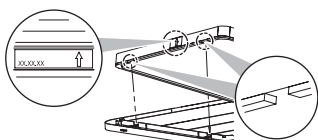


Attach Daikin high performance pre-filter.

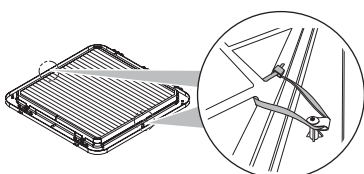
- Attach 2 clamps (delivered with the kit). Do NOT overtight the screw to avoid damaging the suction grille.



- Position the Daikin high performance pre-filter with airflow indicator on the high performance pre-filter frame. Point in the same direction of the airflow.



- Install the Daikin high performance pre-filter securely and fix with tie wraps. The direction of the clamp should match the figure.



- Cut off excess tie wraps.

Re-install the suction grille.

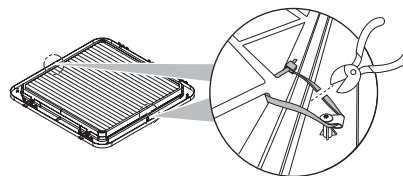
- Perform steps 1 and 2 in reverse order to re-install the suction grille. Refer to the installation manual provided with the indoor unit and decoration panel.

Finish the installation

- Perform the field setting, see "4.1 Field setting" [▶ 3].
- Perform the test run, see the installation manual of the indoor unit.

Replacing the Daikin high performance pre-filter.

- Cut and remove the tie wraps and remove the Daikin high performance pre-filter.



- Follow steps 6~8 to install new filter.

4 Configuration

4.1 Field setting

After installation of the Daikin high performance pre-filter make the following field settings:

- Air volume setting
- Filter sign setting



INFORMATION

Following setting are only applicable when using the BRC1H52* user interface. When using any other user interface, see the installation manual or service manual of the user interface.

Setting: Air volume setting

For model group (refer to "2-1 Model group" [▶ 2])	Setting ⁽¹⁾		
	M	SW	—
A	13 (23)	0	03
		1	02
B		0	02
		1	02
C		1	02
D		0	03

Setting: Filter sign setting

	Setting ⁽¹⁾		
	M	SW	—
All models	10 (20)	0	01

5 Disposal

Prerequisite: Turn off the indoor unit before removing the pre-filter.

- While wearing protective glasses, mask and gloves open the suction grille and remove the pre-filter.
- Put the pre-filter in plastic bag and close tightly.

⁽¹⁾ Field settings are defined as follows:

- M:** Mode number – **First number:** for group of units – **Number between brackets:** for individual unit
- SW:** Setting number
- :** Value number

5 Disposal



INFORMATION

- Daikin high performance pre-filter CANNOT be renewed by washing.
 - Daikin high performance pre-filter can be used up to 12 months (2500 h). Pre-filter lifetime may vary depending on the room conditions. In rooms with lot of pollutants (smoke, pets, high traffic areas...) pre-filter may require more frequent changes.
 - When disposing the pre-filter, follow the local waste separation rules.
-

