

- a. Indoor unit
- b. Domestic hot water outlet
- c. Cold water inlet
- d. Motorised 3-way valve (EKHY3PART)
- e. Domestic hot water tank (optional)
- f. Domestic hot water
- g. Water supply
- h. Thermistor

- a. Innengerät
- b. Brauchwasserauslass
- c. Kaltwassereintlass
- d. Motorisiertes 3-Wege-Ventil (EKHY3PART)
- e. Brauchwasserspeicher (optional)
- f. Brauchwasser
- g. Wasserzufuhr
- h. Fühler

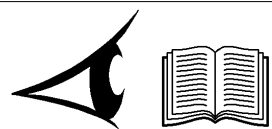
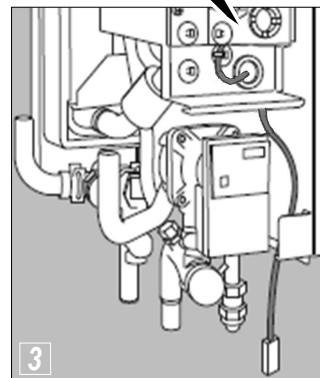
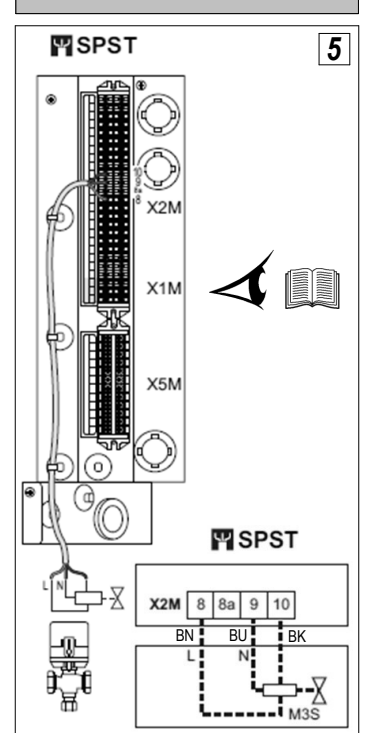
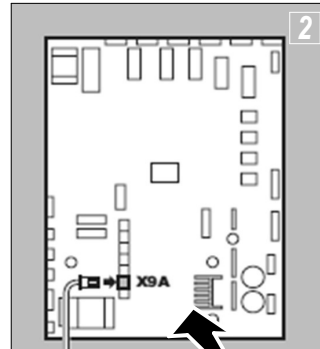
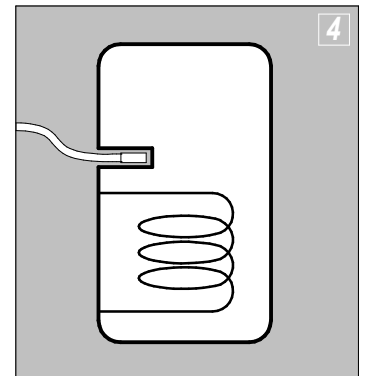
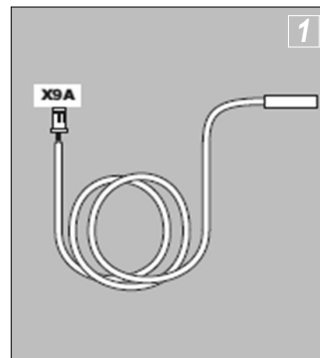
- a. Unité intérieure
- b. Sortie de l'eau chaude sanitaire
- c. Entrée de l'eau froide
- d. Vanne 3 voies motorisée (EKHY3PART)
- e. Ballon d'eau chaude sanitaire (option)
- f. Eau chaude domestique
- g. Alimentation en eau
- h. Thermistance

- a. Unità interna
- b. Uscita dell'acqua calda sanitaria
- c. Entrata dell'acqua fredda
- d. Valvola a 3 vie motorizzata (EKHY3PART)
- e. Serbatoio dell'acqua calda sanitaria (opzionale)
- f. Acqua calda sanitaria
- g. Alimentazione dell'acqua
- h. Termistore

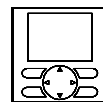
- a. Unidad interior
- b. Salida de agua caliente sanitaria
- c. Entrada de agua fría
- d. Válvula de tres vías motorizada (EKHY3PART)
- e. Depósito de agua caliente sanitaria (opcional)
- f. Agua caliente sanitaria
- g. Suministro de agua
- h. Termistor

- a. Binnenunit
- b. Uitlaat voor warm tapwater
- c. Koudwaterinlaat
- d. Gemotoriseerde 3-wegklep (EKHY3PART)
- e. Tank voor warm tapwater (optioneel)
- f. Warm tapwater
- g. Watertoevoer
- h. Thermistor

CZ GR P TR HR H PL SLO SK BG /...



\*HYHBH0\*AAV3\*  
\*HYHBX08AAV3\*  
\*HYKOMB33AA\*



# 6.8.2.2 > 42F1

EKHY3PART



\*4P376829-1 A 00000005\*

- a. Vnitřní jednotka  
b. Výstup teplé užitkové vody  
c. Vstup studené vody  
d. Motorem ovládaný 3cestný ventil (EKHY3PART)  
e. Nádrž na teplou užitkovou vodu (volitelné příslušenství)  
f. Teplá užitková voda  
g. Přívod vody  
h. Termistor

(CZ)

- a. Εσωτερική μονάδα  
b. Έξοδος ζεστού νερού χρήσης  
c. Είσοδος κρύου νερού  
d. Μηχανοκίνητη 3οδη βάνα (EKHY3PART)  
e. Δοχείο ζεστού νερού χρήσης (προαιρετικό εξάρτημα)  
f. Ζεστό νερό χρήσης  
g. Παροχή νερού  
h. Αισθητήρας

(GR)

- a. Unidade de interior  
b. Saída de água quente sanitária  
c. Saída de água fria  
d. Válvula de 3 vias motorizada (EKHY3PART)  
e. Depósito de água quente sanitária (opcional)  
f. Água quente sanitária  
g. Fornecimento de água  
h. Termistor

(P)

- a. İç ünite  
b. Kullanım sıcak suyu çıkışı  
c. Soğuk su girişi  
d. Motorlu 3 yollu vana (EKHY3PART)  
e. Kullanım sıcak suyu boyleri (opsiyonel)  
f. Kullanım sıcak suyu  
g. Su beslemesi  
h. Termistör

(TR)

- a. Unutarnja jedinica  
b. Izlaz kućne vruće vode  
c. Ulaz hladne vode  
d. 3-putni motorni ventil (EKHY3PART)  
e. Spremnik kućne vruće vode (opcionalno)  
f. Kućna vruća voda  
g. Opskrba vodom  
h. Termistor

(HR)

- a. Beltéri egység  
b. Használati meleg víz kimenete  
c. Hideg víz bemenete  
d. Motoros 3-járatú szelep (EKHY3PART)  
e. Használatimelegvíz-tartály (opcionális)  
f. Használati meleg víz  
g. Vízellátás  
h. Hőmérséklet-érzékelő

(H)

- a. Jednostka wewnętrzna  
b. Wylot ciepłej wody użytkowej  
c. Wlot zimnej wody  
d. Elektrozawór 3-drogowy (EKHY3PART)  
e. Zbiornik ciepłej wody użytkowej (opcjonalny)  
f. Ciepła woda użytkowa  
g. Doprowadzenie wody  
h. Termistor

(PL)

- a. Notranja enota  
b. Izstop tople vode za gospodinjstvo  
c. Dovod mrzle vode  
d. Motorizirani 3-potni ventil (EKHY3PART)  
e. Rezervoar za toplo vodo za gospodinjstvo (opcijnsko)  
f. Topla voda za gospodinjstvo  
g. Dovod vode  
h. Termistor

(SLO)

- a. Vnútroňá jednotka  
b. Výstup teplej vody pre domácnosť  
c. Prívod studenej vody  
d. 3-cestný ventil so servomotorom (EKHY3PART)  
e. Nádrž na teplú vodu pre domácnosť (voliteľná výbava)  
f. Nádrž vody pre domácnosť  
g. Prívod vody  
h. Termistor

(SK)

- a. Вътрешно тяло  
b. Изход на битовата гореща вода  
c. Вход на студената вода  
d. Моторизиран 3-пътен вентил (EKHY3PART)  
e. Бойлер за битова гореща вода (допълнително оборудване)  
f. Битова гореща вода  
g. Водопровод  
h. Термистор

(BG)



### ONLY FOR THE UK

Domestic hot water installations must be installed, commissioned and maintained by a competent person in accordance with Building Regulation G3 (England and Wales), Technical Standard P3 (Scotland) or Building Regulation P5 (Northern Ireland) and the Water Fitting Regulations (England and Wales) or Water Byelaws (Scotland). As such, the installed cylinder must comply with the above mentioned regulations.



To comply, the required safety devices can include, but are not limited to:

- a thermal cut out
- a temperature / pressure relief valve
- a motorised 2-port valve to interrupt the flow in case of high temperature
- other if required according to (local) regulations

# EKHY3PART