

# ROTEX wall mounted gas condensing boiler

a member of **DAIKIN** group

# ROTEX



Warmly  
recommended:  
efficient, safe,  
economical.

ROTEX GW-20/30 **Wall mounted gas condensing boiler.**



**"We hardly notice our heating system. It is extremely quiet, easy to use, doesn't take up much space and is also very economical. We're pleased we opted for the ROTEX gas condensing boiler for our heating and hot water. Our installer recommended it and it was definitely the right choice for us."**

**Bernd and Birgitt Schneider, home owners**

# Gas condensing technology from ROTEX.

## The best response to rising prices: efficiency.

Energy is becoming increasingly precious and expensive. Choosing a boiler for your heating system is a decision affecting the next 15 to 25 years. During this time costs for your heating system will rise to a multiple of its initial investment. When investing in a new heating system, it is therefore worth giving the decision careful consideration. Gas condensing systems from ROTEX are developed and manufactured according to the very latest combustion and thermal technology.

## Get more from condensing technology.

State of the art condensing technology converts fuel into available heat with virtually no losses. Flue gases are cooled until the water vapour they contain has been condensed. The energy generated is used as heating energy. This makes gas condensing boilers up to 20% more efficient than standard boilers.

## Optimum technology, maximum efficiency, minimum footprint – the ROTEX GW-20/30.

Thanks to energy-saving condensing technology, the ROTEX GW-20/30 achieves efficiency levels of up to 109%. The small footprint, extremely straightforward operation and installation, quiet running and maximum efficiency for domestic hot water and central heating are all features that set these ROTEX gas condensing boilers apart.

## Hot water at any time.

For DHW heating, you can opt for the hygienic instantaneous water heater principle (version C) or use the boiler in conjunction with the ROTEX Sanicube high performance thermal store for maximum DHW hygiene and convenience (version H).

### 1. The combi boiler (version C).

Through the application of the instantaneous water heater principle, the ROTEX GW-20/30 heats DHW particularly efficiently thanks to its special 2-in-1 heat exchanger. Additional functions offer optimum convenience: the COMFORT function ensures that hot water is available quickly whenever you want it. In ECO mode, the boiler "learns" to recognise your specific hot water requirements and pre-heats the water accordingly.

### 2. Combined with a thermal store (version H).

For a higher DHW demand, we recommend using the boiler in conjunction with a thermal store. The ROTEX Sanicube represents a combination of domestic hot water tank and instantaneous water heater. The water to be heated is routed through and heated by a separate high performance stainless steel heat exchanger. The Sanicube therefore offers outstanding benefits in terms of water hygiene, which have been confirmed in an extensive study by the Hygiene Institute at the University of Tübingen.



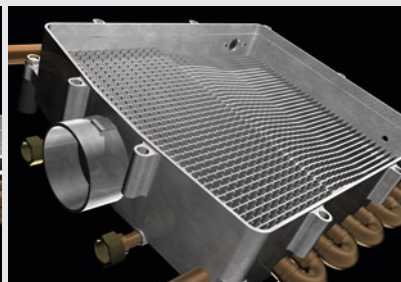
1. ROTEX GW-20/30 version C – the intelligent combi boiler for domestic hot water and central heating.

2. ROTEX GW-20/30 version H – for excellent domestic hot water convenience in conjunction with a ROTEX thermal store.





ROTEX GW-20 straight fins



ROTEX GW-30 labyrinth fins

**Innovative heat exchangers.**

The larger heat exchanger surface with labyrinth fins and an high efficiency pump increase DHW heating efficiency to 101.4 % in the GW-30 model (GW-20 model: 95.8 %).

# It's a matter of the right technology.

## Easy, convenient, individual.

The ROTEX GW-20/30 offers two product ranges that can cover every demand. From the GW-20 standard model right through to the GW-30 high efficiency class, with high efficiency high efficiency pump and larger heat exchanger surface as standard.

## Convenience guaranteed.

Heat exchangers in the GW-20/30 models come with a ROTEX 10-year guarantee.

## Quick installation and maintenance.

The mounting rail, available as an option, with pre-assembled expansion vessel and all necessary connection valves ensures quick and easy installation in the smallest of spaces. The compact product design, with just a small number of individual parts not only increases the reliability of the boiler, but also reduces the usual maintenance costs. All individual parts, are easily accessible, making maintenance easier too.

## Your benefits at a glance.

- Energy-saving condensing technology with efficiency levels of up to 109%
- Maximum efficiency thanks to the 2-in-1 heat exchanger (in every combi boiler)
- Copper pipes in the heat exchanger for a long service life
- Extremely convenient technology in the smallest of spaces
- Very quiet operation
- With 3-way valve, ideal for use in conjunction with thermal stores
- 10-year guarantee on the heat exchanger

	ROTEX GW-20	ROTEX GW-30
Heat exchanger	Straight fins	Labyrinth fins
Circulation pump	Standard pump	High efficiency pump
DHW heating efficiency	95.8%	101.4%

## Two product ranges – but always the first choice.

The ROTEX gas condensing boiler is available in two different versions:

The GW-20 models are a simple introduction to efficient gas condensing technology.

The GW-30 models offer maximum convenience and maximum efficiency – without compromise.

Innovative 2-in-1 heat exchanger with 2 separate DHW and process water circuits in the same casing (version C)

Communication with wireless thermostats

Temperature control with virtually any commonly used thermostat

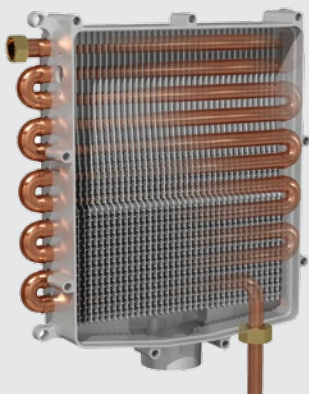
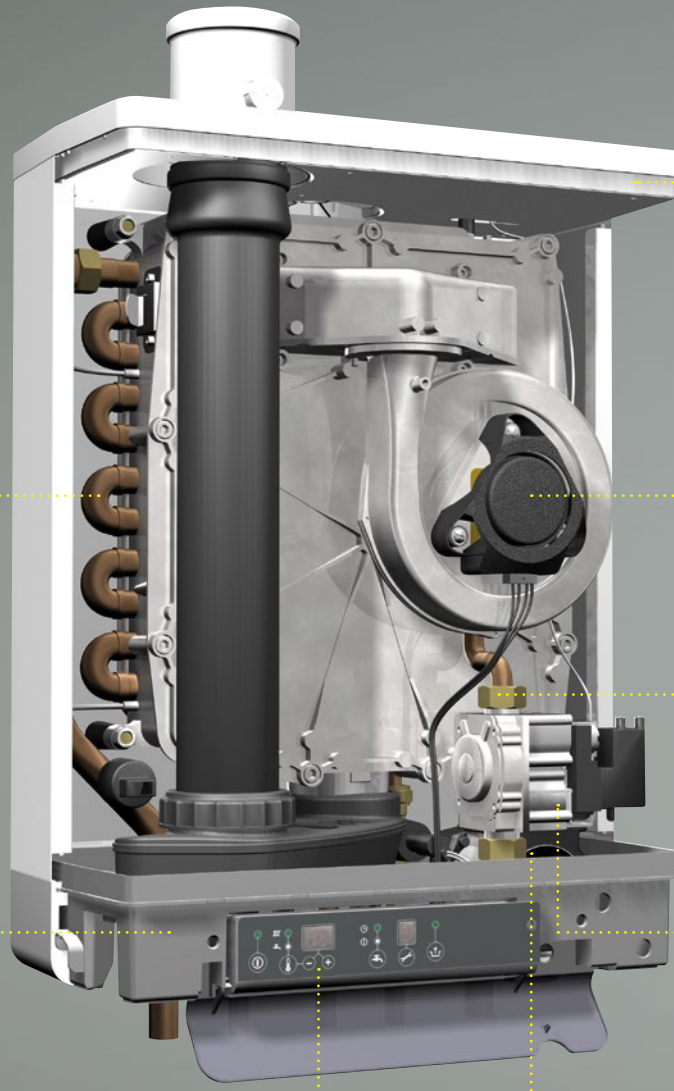
Quiet operation and low radiation losses thanks to vacuum insulation

Fan with speed control

Low maintenance thanks to the small number of moving parts

Pneumatic gas combination valve regulates the gas/air ratio and guarantees consistent combustion quality across the entire output range

High efficiency pump (GW-30)



**DHW heating up to 30% more efficient with version C.**

*The special 2-in-1 heat exchanger of the ROTEX GW-20/30 gas condensing boiler is used for central heating and DHW heating. Because it heats the domestic hot water directly, employing the hygienic instantaneous water heater principle, the appliance still operates within the condensing range for DHW heating. This leads to an increase in efficiency of up to 30% compared to conventional gas condensing boilers.*

# Specification



Wall mounted gas condensing boilers (version C)	Unit	GW-30 22C	GW-30 28C	GW-30 33C	GW-20 22C	GW-20 28C	GW-20 33C
		Type					
		RKOMBG22AA	RKOMBG28AA	RKOMBG33AA	RKOMB22AA	RKOMB28AA	RKOMB33AA
<b>Heating</b>							
Rated heating output with $P_n$ (80/60 °C)	kW	5.4–22.7	7.1–28.4	7.4–32.1	5.4–17.8	6.9–22.8	7.1–26.3
Rated heating output with condensation $P_{nc}$ (50/30 °C)	kW	5.9–23.8	7.7–31.1	8.2–35.0	5.9–18.5	7.6–23.4	7.8–27.1
Efficiency	%	Up to 109			Up to 109		
Maximum permissible operating pressure (heating)	bar	3			3		
Maximum permissible flow temperature (central heating)	°C	90			90		
<b>Domestic hot water heating (DHW)</b>							
Rated heating output $P_{nw}$	kW	5.9–22.7	7.7–28.4	8.2–32.1	6.1–21.0	6.6–26.2	7.9–31.5
Minimum draw-off rate	l/min	1.5			1.5		
DHW draw-off rate at 40 °C	l/min	10	12.5	15	10	12.5	15
DHW draw-off rate at 60 °C	l/min	6	7.5	9	6	7.5	9
DHW temperature (default)	°C	60			60		
<b>Key details</b>							
Size (W x D x H)	mm	450 x 240 x 590	450 x 240 x 650	450 x 240 x 710	450 x 240 x 590	450 x 240 x 650	450 x 240 x 710
Dry weight	kg	30	33	36	30	33	36
Balanced flue connection diameter (concentric)	mm	60/100			60/100		
Appliance type		$C_{13} \cdot C_{33} \cdot C_{43} \cdot C_{53} \cdot C_{63} \cdot C_{83} \cdot C_{93}$			$C_{13} \cdot C_{33} \cdot C_{43} \cdot C_{53} \cdot C_{63} \cdot C_{83} \cdot C_{93}$		



Wall mounted gas condensing boilers (version H)	Unit	GW-30 12H	GW-30 18H	GW-20 12H	GW-20 18H	GW-20 42H
		Type				
		RHOBG12AA	RHOBG18AA	RHOB12AA	RHOB18AA	RHOB42AA
<b>Heating</b>						
Rated heating output with $P_n$ (80/60 °C)	kW	3.4–12.2	5.5–18.3	3.4–11.5	5.4–17.8	7.7–40.9
Rated heating output with condensation $P_{nc}$ (50/30 °C)	kW	3.7–13.0	5.8–19.5	3.8–12.0	5.9–18.1	8.5–42.2
Efficiency	%	Up to 109				
Maximum permissible operating pressure (heating)	bar	3				
Maximum permissible flow temperature (central heating)	°C	90				
<b>Key details</b>						
Size (W x D x H)	mm	450 x 240 x 590	450 x 240 x 590	450 x 240 x 590	450 x 240 x 590	450 x 240 x 710
Dry weight	kg	30	30	28	28	34
Balanced flue connection diameter (concentric)	mm	60/100				
Appliance type		$C_{13} \cdot C_{33} \cdot C_{43} \cdot C_{53} \cdot C_{63} \cdot C_{83} \cdot C_{93}$				





a member of **DAIKIN** group

### **What makes ROTEX different?**

We offer individual solutions for optimum living and working that are straightforward, intelligent, and futureproof.

ROTEX is a manufacturer and supplier of complete innovative and environmentally responsible heating systems – building on decades of experience. Since 1973, ROTEX has stood for innovation and know-how in the field of heat generation, storage and distribution. In the development of products for our high grade and perfectly matched components we focus on user benefits.

The ROTEX product range extends from air-to-water heat pumps, condensing boilers for oil and gas, solar thermal systems and thermal stores, not forgetting underfloor heating, heating oil tanks and rainwater tanks, right up to a comprehensive installation system for all sanitary and heating equipment. Innovative systems that facilitate the optimum use of conventional and alternative fuel types in both modernisation and new build projects. ROTEX products stand for unique cost efficiency with maximum environmental compatibility and the highest levels of flexibility.

ROTEX Heating Systems GmbH is a wholly owned subsidiary of Daikin Europe NV, making it a member of the DAIKIN Group, the world's leading manufacturer and supplier of products for heating, ventilation and climate control. Our combined competence generates optimum product solutions to meet the highest user aspirations.

### **ROTEX Heating Systems GmbH**

Langwiesenstraße 10  
D-74363 Güglingen  
Tel +49 (71 35) 103-0  
Fax +49 (71 35) 103-200  
E-Mail [info@rotex.de](mailto:info@rotex.de)  
[www.rotex-heating.com](http://www.rotex-heating.com)