



Air conditioners

Cooling only

R-22

- » **'Plug and play'**
for easy installation
- » **High efficiency**
- » **Quick cooling**
- » **Wide operation range**
- » **Compact unit**

Rooftop, an economical solution for medium to large spaces



www.daikinme.com



UAT-CGXY



REMOTE CONTROL

Features

Plug and play installation

The single unit configuration requires no additional piping work as both the indoor and outdoor sides are pre-connected. Once the ductwork is installed, the only thing left to do is connect the unit. The horizontal air discharge from the top and return air from the bottom make duct design easy.



High efficiency

Supplied with high efficiency and reliable scroll compressors, optimized heat exchangers and high-performing fans, the rooftop UAT-AY1 and UAT-CGXY series are designed to ensure a high energy efficiency and reduced consumption.

UAT-CGXY high efficiency range



- › Specially designed to deliver top performance in both standard and high ambient temperature conditions, in terms of capacity and efficiency
- › Higher efficiency: Nominal EER up to 3,36 W/W (11,47 Btu/hr/W)
- › Optimised *de*-rating factor: capacity performance at 46°CDB is around 90% of total capacity at 35°CDB
- › Low energy consumption at 48°CDB: lower than 1,7 kW/TR*

Model	UAT150CGXY	UAT180CGXY	UAT240CGXY	UAT300CGXY
Power consumption at 48°CDB(kW/TR)	1.51	1.55	1.62	1.57

Table: Power consumption at 48°CDB (kW/TR)

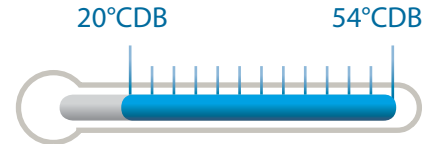
* The efficiency at 48°CDB of the UAT-CGXY is compliant with the Kuwait MeW minimum requirements

Large line up

Operation	Range	Outdoor	Unit	Line-up overview - Capacity (Btu/hr)											
				60.000	80.000	100.000	115.000	150.000	200.000	250.000	300.000	330.000	400.000		
C/O	Standard efficiency	UAT-AY1		[Blue bar]										[Blue bar]	
	High efficiency	UAT-CGXY						[Blue bar]							

Wide operation range

The units operate from 54°CDB (UAT-AY1 from 52°CDB) down to 20°CDB in cooling mode.



Compact and light

The flat top design of the unit allows for maximum utilization of warehouse and container space, while the light frame ensure ease of handling and installation.

Flexibility of Air Supply **

A belt driven fan is used such that the air volume and static pressure required can be adjusted according to the requirements. This flexibility allows for wider application and offers the possibility to reach the best working conditions considering the unit’s characteristics.

** The pulley (field supply) is changeable at site for flexibility in terms of static pressure and air flow.

Easy to control

User-friendly wired remote controller is offered as standard:

- › SLM controller, for UAT-AY1 180/240/280/320, includes 15 hour delay timer, temperature setting...
- › Sequential LCD controller, for UAT-CGXY and UAT-AY1 C10/C12, incorporates many functions like a 7 programmable timer, temperature setting, compressor running, error status, energy saving mode and key lock function.
- › For applications requiring mechanical control, the high efficiency range offers an optional series: UAT-CGX9***.

*** For more details, please contact your local dealer

Indoor air quality

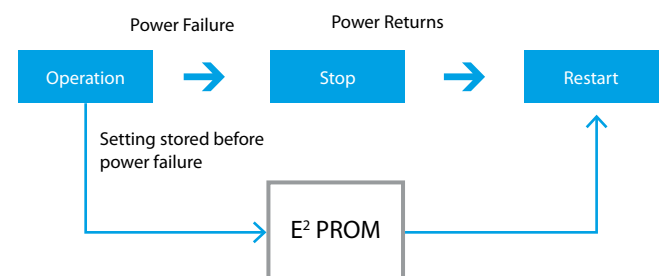
- › The standard washable filter can easily be accessed for facilitated maintenance.
- › An additional field supplied filter can easily be installed on the 2 inch rail to meet the indoor air quality requirements of the application.

Auto random restart with last state memory

- › In case of sudden power failure during operation, unit will be automatically restarted in 180s – 224s different recovery timing patterns
- › The operation is based on the previous setting: Mode, Temperature and Fan Speed.
- › This ensures that air conditioners in the same building resume control randomly instead of turning on at the same time, preventing power surge after a blackout.

In case of sudden power failure, random restart with previous settings to prevent power surges after blackout.

Auto Restart System

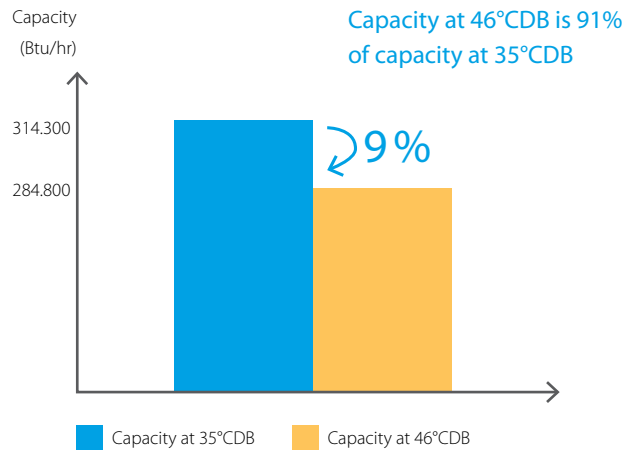


High Efficiency range: UAT-CGXY



Line up overview - Capacity (Btu/hr)	150.000	200.000	250.000	300.000
Capacity class index	150	180	240	300

High performance under standard and high ambient conditions - UAT300CGY



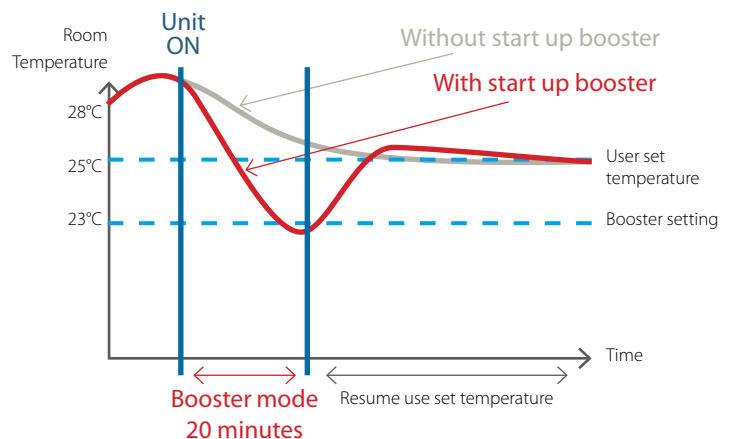
2 independent refrigerant circuits

Two independent refrigerant circuit can be controlled individually, allowing the unit to run at **part load** when less capacity is required.

Start-up booster mode for quick cooling

if the unit restarts two hours after it has stopped or during power-on-reset, the unit will enter into a booster mode by automatically reducing the set temperature by 2°C for faster cooling.

Programmed as standard on the unit to guarantee high cooling comfort at start up



Separate service panel

Service panels are divided into two different sections for ease of servicing. Preliminary servicing & Troubleshooting can be conducted by opening the top service panel, without stopping the unit operation.

Anti corrosion protection as standard

Standard anticorrosion protection with the hydrophilic gold fin coating, giving the condenser coil a longer life span under corrosive environment.

Quiet operation as standard

The operating sound level is down to 66 dBA.

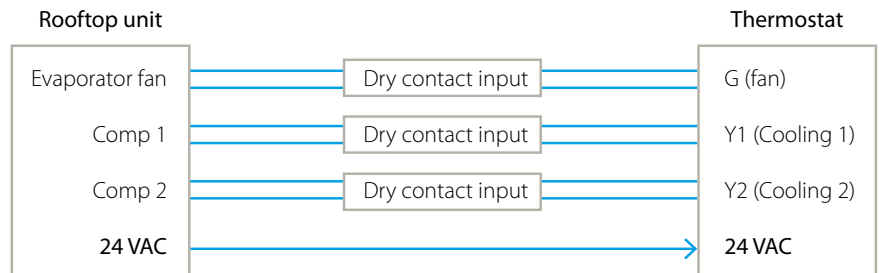
Easy duct design

Horizontal air discharge from the top and return air from the bottom for an easy duct design.

Flexible control: optional mechanical control series

For certain applications a mechanical control is required instead of PCB control. For the UAT-CGY series this is available through an optional series***. The rooftop with mechanical control provides connection to the thermostat for control of evaporator fan motor, compressors and condenser fan motor, and has a 24 Volt transformer provided for field installed thermostat.

*** Mechanical control rooftop series name is UAT-CGX9.



Cooling only

INDOOR UNIT				UAT150CGXY		UAT180CGXY		UAT240CGXY		UAT300CGXY		
Cooling capacity	Nom.			kW	43.96 (1) / 42.26 (2) / 39.21 (3) / 38.71 (4)	56.36 (1) / 54.25 (2) / 50.85 (3) / 49.765 (4)	74.74 (1) / 71.81 (2) / 67.409 (3) / 64.478 (4)	92.12 (1) / 87.92 (2) / 83.47 (3) / 81.565 (4)				
				Btu/h	150,000 (1) / 144,200 (2) / 133,800 (3) / 132,100 (4)	192,300 (1) / 185,100 (2) / 173,500 (3) / 169,800 (4)	255,000 (1) / 245,000 (2) / 230,000 (3) / 220,000 (4)	314,300 (1) / 300,000 (2) / 284,800 (3) / 278,300 (4)				
Power input	Cooling	Nom.		kW	13.07	16.92	23.00	28.36				
EER				W/W	1.51 (4)	1.55 (4)	1.62 (4)	1.57 (4)				
				Btu/hr/W	11.5 (1) / 11.0 (2) / 10.2 (3) / 10.1 (4)	11.4 (1) / 10.9 (2) / 10.4 (3) / 10.0 (4)	11.1 (1) / 10.7 (2) / 10.0 (3) / 9.6 (4)	11.1 (1) / 10.6 (2) / 10.0 (3) / 9.8 (4)				
Evaporator	Air flow rate	Cooling		m ³ /min	130.38	184.08	223.74	246.06				
				cfm	276,262	390,047	474,083	521,377				
	External static pressure (standard)			Pa	125	150	200	250				
Evaporator piping connections	Casing	Colour		Light grey								
	Condensation drain size			OD	25.40							
Condenser	Dimensions	Unit	Height/Width/Depth	mm	1,390x1,965x1,630		1,690x1,965x1,905		1,650x2,410x2,030			
	Weight	Unit		kg	600	650	850	980				
	Casing	Colour			Light grey							
		Material			-							
	Operation range	Cooling	Min.~Max.	°CDB	19~54							
	Sound pressure level	Nom.		dBA	66	68	73					
	Sound power level	Nom.		dBA	85	87	92					
Refrigerant	Type			R-22								
Power supply	Phase/Frequency/Voltage			Hz/V 3N~/50/380-415								

(1) Gross cooling capacity based on 26.7 °C DB/19.4 °C WB indoor and 35 °C DB outdoor (2) Cooling capacity based on ARI standard with condition 26.7 °C DB/19.4 °C WB indoor and 35 °C DB outdoor (3) Gross cooling capacity based on 26.7 °C DB/19.4 °C WB indoor and 46 °C DB outdoor (4) Gross cooling capacity based on 26.7 °C DB/19.4 °C WB indoor and 48 °C DB outdoor (5) Gross capacity does not include the effect of evaporator fan motor heat (6) All specifications are subjected to change by the manufacturer without prior notice. (7) Cooling: indoor temp. 27°CDB, 19°CWB; outdoor temp. 35°CDB, 24°CWB (8) All units are being tested and comply to ISO1511. (9) Sound pressure levels are according to JIS B 8615 standard. Position of the measurement is 1m in front and 1m below the unit. (10) Designation based on cooling cycle.

Standard Efficiency range:

UAT-AY1



Line up overview - Capacity (Btu/hr)	60.000	80.000	100.000	115.000
Capacity class index	180	240	280	320
Cooling only				



Line up overview - Capacity (Btu/hr)	330,000	400,000
Capacity class index	C10	C12
Cooling only		



High efficiency

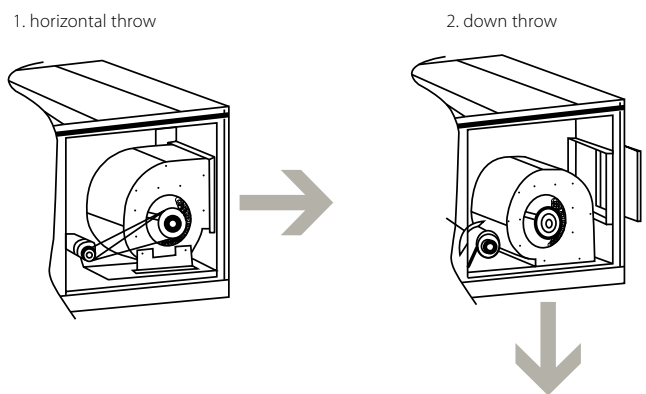
Nominal EER up to 3,08 W/W (10,5 Btu/hr/W)

Partial loading

The 2 compressors systems can run at part load when less capacity is required.

Field convertible return and supply air increases flexibility of installation*

The return and discharge air flow can be shifted to vertical mode, by simply repositioning the fan group.



Quiet operation as standard

The operating sound level is down to 63 dBA.

* available on UAT320AY1

Cooling only

INDOOR UNIT				UAT180AY1	UAT240AY1	UAT280AY1	UAT320AY1	UATC10AY1	UATC12AY1
Cooling capacity	Nom.	kW		17.291 (1)	23.446 (1)	29.307 (1)	33.996 (1)	96.420 (1)	118.401 (1)
		Btu/h		58,999.347	80,001.081	99,999.645	115,999.179	328,998.732	404,001.025
Power input	Cooling	Nom.	kW	5.61 (1)	8.10 (1)	10.50 (1)	11.56 (1)	39.87 (1)	46.80 (1)
EER		W/W		3.08 (1)	2.89 (1)	2.79 (1)	2.94 (1)	2.42 (1)	2.53 (1)
		Btu/hr/W		10.52	9.88	9.52	10.03	8.25	8.63
Evaporator	Air flow rate	Cooling	m ³ /min	51	80	100	102	312	354
			cfm	1,801	2,825	3,532	3,602	11,018	12,502
	External static pressure (standard)	Pa		98				294	
Evaporator piping connections	Condensation drain size	OD	mm	25.4					
Condenser	Dimensions	Unit	HeightxWidthxDepth	mm	1,000x1,100x1,530	1,000x1,300x1,530		1,974x2,252x3,180	
	Weight	Unit	kg	295	370	400	425	1,510	1,600
	Casing	Colour	Light grey						
		Material	Electro-galvanised mild steel						
	Operation range	Cooling	Min.~Max.	°CDB	20~54				
	Sound pressure level	Nom.		dBA	63	65	66	68	80
Power supply	Refrigerant	Type	R-22						
		Phase/Frequency/Voltage	Hz/V	3~/50/380-415					

(1) Cooling: indoor temp. 27°CDB, 19°CWB; outdoor temp. 35°CDB, 24°CWB (2) All units are being tested and comply to ISO5151. (3) All specifications are subjected to change by the manufacturer without prior notice. (4) Sound pressure levels are according to JIS B 8615 standard. Position of the measurement is 1m in front and 1m below the unit. (5) Designation based on cooling cycle.



UAT-CGXY



Remote control



FSC

ECPEN13-135

The present leaflet is drawn up by way of information only and does not constitute an offer binding upon Daikin Europe N.V. Daikin Europe N.V. has compiled the content of this leaflet to the best of its knowledge. No express or implied warranty is given for the completeness, accuracy, reliability or fitness for particular purpose of its content and the products and services presented therein. Specifications are subject to change without prior notice. Daikin Europe N.V. explicitly rejects any liability for any direct or indirect damage, in the broadest sense, arising from or related to the use and/or interpretation of this leaflet. All content is copyrighted by Daikin Europe N.V.

Daikin products are distributed by: